

SCHOOL NEWSLETTER

TERM 2 TUESDAY 10 MAY 2022



CONTACT US

 Facebook

 Koromatua School 355 Korom...

 enquiries@koromatua.school....

 +64 7 8479 828

 koromatua.school.nz

PANUI TE TUMUAKI

Kia ora e te whānau,

It was so awesome to see our tamariki return to kura last week. We had 85% attendance, which was very pleasing to see. It is going to be a great term of learning, growing and showing kindness to each other.

POWHIRI

It was a wonderful day last Monday. Our whole school welcomed our new tamariki, kaiako and whanau. We haven't been able to do it for the last few terms. It was so lovely to see everyone. Thank you to our wonderful PTA whanau who brought in kai for us to enjoy after the powhiri. A special thanks to Chrissy Makata, Sanoe DeCaires and Lynette Cassidy for setting up the kai and clearing away afterwards. Special mention also goes to our Student Council who helped to set up the hall and clean up.

ANGELA HELEY - NEW PERMANENT KAIAKO

A warm congratulations to Angela Heley who has been offered and accepted the permanent teaching position at our kura. Whaea Ange is currently teaching the New Entrant children in Room 6 and will continue to teach them for this term. Next term she will teach in Room 7 as Mrs Anneli Duvnhage will be returning to teach the new entrant class. We are so excited to have Whaea Ange at our kura permanently. Her enthusiasm and energy is awesome!

BELINDA POLLOCK - NEW FIXED TERM KAIAKO

We would like to welcome Belinda Pollock to our Koromatua whaanau. Belinda is teaching in Room 7 this term. Belinda and her whaanau have returned to the Temple View community, having been away for a few years. Belinda's three children started at our kura at the start of the year. They are Jackson, Max and Olive. Nau mai, Haere mai Belinda.

CRAZY HAIR DAY - Friday 6 May

Thank you for supporting this important kaupapa. We had a parade and special assembly for this kaupapa. We ended our day with an emotional tribute from Whaea Raharu for her mum. Whaea Raharu's mum, Gloria Hollis has bowel cancer and Whaea Raharu is raising money for cancer research. On Friday Whaea Raharu shaved her hair for this cause. As I knelt and held her hand I felt so honoured to be part of this special moment. Whaea Raharu loves her mum very much and this was her way of showing her aroha for her mum. Our school raised \$212.10 with our donations. Ngaa mihinui :)

PARENT/TEACHER INTERVIEWS

These were yesterday and today **Monday 9th and Tuesday 10th of May**. These hui are an opportunity to talk about your child's learning and progress. They are useful, positive meetings where as well as hearing from your child's teacher, you can ask questions and share your thoughts. Thank you to those parents who braved the rain and cold to come and see their tamariki's kaiako yesterday. We look forward to seeing some more whaanau coming to kura today.

Thank you whaanau. Thank you for your tautoko and awhi to your tamariki and our kaiako at this time.

Kia haumaru

Kia tuupato

Ngaa manaakitanga,
Rosina Nin

MOVING TO ORANGE TRAFFIC LIGHT SYSTEM

Kia ora koutou,

You'll be aware that Minister of Education Chris Hipkins announced that New Zealand would move to Orange from 11:59pm Wednesday 13 April. As the start of Term 2 will be our first school day at Orange, I wanted to give you an update on what the move to Orange means for our school.

FACE MASKS

At Orange, face masks are no longer required at school. Public health advice is that masks continue to be strongly encouraged when indoors and during large gatherings. Visitors,

including parents and caregivers, have been strongly encouraged to wear a mask when indoors.

After consultation with the community, the Board have decided that Koromatua School will allow anyone who enters the school gates to choose whether they wear a face mask or not. Any student, staff member, or visitor who wishes to wear a face mask at Orange should be supported to do so.

At Orange, students aged 12 and above are still required to wear a face mask on school or public transport. Your child (if they are Year 4+) may still need a mask when participating in school activities that are off-site. The school will let you know if a mask will be required for these outings.

GATHERINGS AND VISITORS

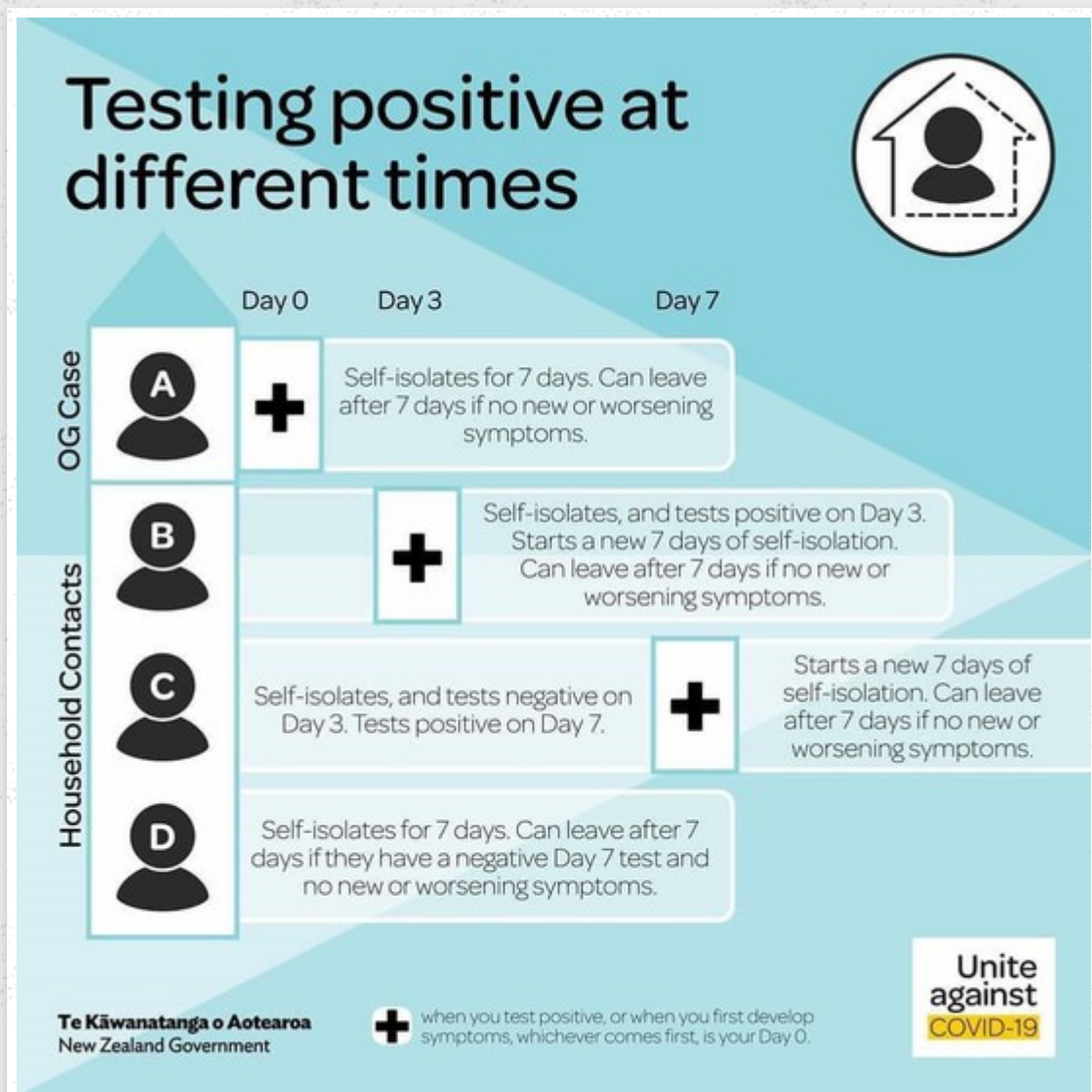
We are pleased to advise we can now hold assemblies and other activities with large numbers. At Orange there are no restrictions on numbers of visitors on site. We have missed having our community, including parents and caregivers at our school and events. Please sign into the visitors register as per normal.

We will continue to keep all the other health measures in place at school that we know slow the spread of COVID-19. These include ensuring our indoor spaces are well-ventilated, maintaining good hand hygiene and cough and sneeze etiquette, appropriate physical distancing whenever we can and, most importantly, staying home if we are sick.

We appreciate the feedback we received from our community during our consultation to make this decision easier. We are looking forward to a few less restrictions and returning to school life that is a bit closer to normal.

Ngā mihi,

Stuart Cassidy
Presiding Member
Koromatua School Board



PEANUT FREE POLICY NO LONGER IN PLACE

The Peanut-Free Policy that the school has had for the past few years is no longer in place. Students can now bring kai that contains 'traces of peanuts' or peanut products in their lunchboxes.

SCHOOL CAMPS 2022

Kia ora koutou,

Our Year 5&6 and Year 7&8 students have their camps. Both camps are in Term 4.

Camp Karakariki - Year 5&6

Wednesday 30th November - Friday 2nd December

Camp Fee is \$60

Camp Raglan - Year 7&8

Wednesday 26th October - Friday 28th October

Camp Fee is \$45

Camp Payment for both camps is due on **Thursday 27th of September.**

However a few families have paid camp fees already. We encourage whaanau to pay their camp fees as soon as they can.

Please note that camp costs are considerably reduced this year to assist whaanau, especially for those parents who have 2 or more tamariki in Years 5-8.

With COVID-19 affecting our whaanau financially, our school board have assisted with these costs to give ALL tamariki in Years 5-8, an opportunity to attend their camps this year.

We really appreciate our school board's aroha and manaakitanga to ensure that no tamaiti misses out on this experience.

Thank you to those parents who have volunteered to help at these 2 camps. We appreciate your awahi and tautoko.

FROM THE OFFICE



CHANGE OF ADDRESS OR PHONE NUMBER???

Please contact the school office if you have moved or have a new phone number to update your child's details. This is extremely important if we need to contact you, especially in emergencies and for the parent app.

ABSENCE NOTIFICATION

If your child is going to be away, please notify the school. You can do this in a number of ways: Email enquiries@koromatua.school.nz

Call 07 847 9828

Enter on the parent app

TERM DATES 2022

Term 1: Tuesday 8 February – Thursday 14 April

Term 2: Monday 2 May – Friday 8 July

Term 3: Monday 25 July – Friday 30 September

Term 4: Monday 17 October – Friday 16 December

TERM EVENTS

Monday 2nd May

Powhiri 9:30am

COHORT Entry

Friday 6th May

Crazy Hair Day

School Assembly 2:15pm

Monday 9th May

Parent Interviews 3:20-5:30pm

Tuesday 10th May

Parent Interviews 3:20-5:30pm

Parent Interviews 6:00-8:00pm

Thursday 12th May

National Young Leaders Day - Student Council and Yearbook Committee attending.

Friday 20th May

PINK SHIRT DAY - Stand up to Bullying

School Assembly 2:15pm

Monday 23rd - Friday 27th May

EXCITE ACADEMY - Music sessions with all classes

Friday 3rd June

Staff Only Day - NZ Primary Teachers Collective Agreement

Children DO NOT come to school

Monday 6th June

Queen's Birthday Public Holiday

Tuesday 7th June

COHORT Entry

Tuesday 7th - Friday 10th June

BOOK WEEK - Book Fair in the hall

Friday 10th June

Lower Waipa Winter Sports Tournament - Ngahinapouri School

Monday 13th June

Lower Waipa Winter Sports Tournament - postponement date

Tuesday 13th June

Career Expo for Yr 7 & 8 at the Claudelands Event Centre

Friday 17th June

School Assembly 2:15pm

Monday 20th - Thursday 23rd June

MATARIKI WEEK

Wednesday 22nd June

Grandparents/Special Friend Day 9:00-12:00pm

Thursday 23rd June

Tuakana syndicate going to watch a Matariki show at Fairfield College

Friday 24th June

MATARIKI Public Holiday

Monday 27th June

Staff Only Day - NZ Primary Teachers Collective Agreement

Children DO NOT come to school

Thursday 30th June

School Photos

Friday 1st July

PYJAMA DAY

Monday 4th July - Friday 8th July

EXCITE ACADEMY - Drama sessions with all classes

Friday 8th July

LAST day of Term 2

Reports coming home



About NYLD | National Young Le...

nyldnz.org

Leaders are often made, not simply born. We are dedicated to sparking the leadership potential that's inside every young person through practical, inspirational events and leadership resources. The National Young Leaders Days (NYLD) are the largest and longest running leadership event for primary and intermediate school students.

Speak UP #PINKSHIRTDAYNZ
STAND TOGETHER
STOP BULLYING
KŌRERO MAI, KŌRERO ATU, MAURI TŪ, MAURI ORA
FRIDAY 20 MAY 2022

PINK SHIRT DAY 2022

Mental Health Foundation
mauri tū, mauri ora



Excite! Music and Arts Academy...

www.exciteacademy.co.nz

Excite Academy offers a range of classes and workshops for all ages, from Art, Drama and Musical Theatre, to Vocals and Individual Instrument sessions.